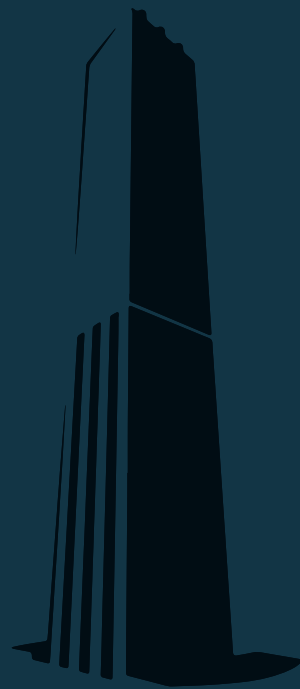


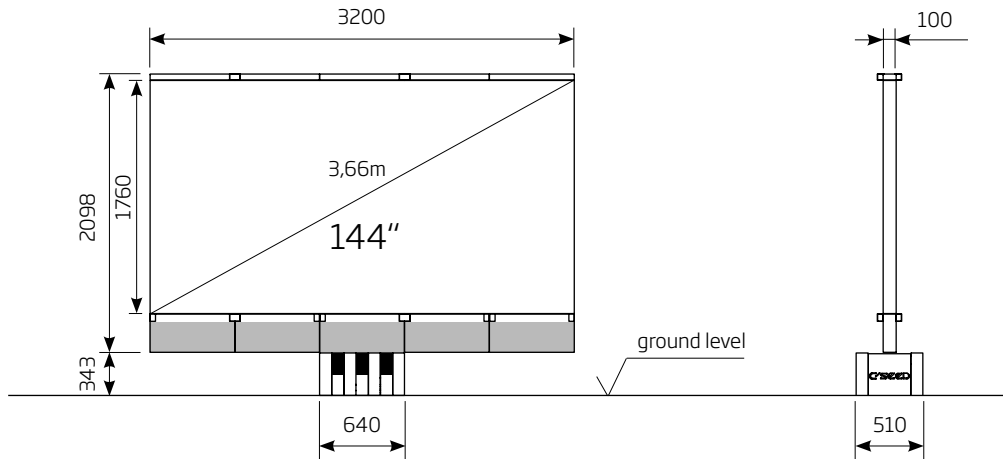


# IMPLEMENTATION CONCEPT

C SEED 144 HLR



C/SEED



**PHYSICAL DIMENSIONS TV**

|                             |                       |            |
|-----------------------------|-----------------------|------------|
| LED TV size (diagonal)      | inch/mm               | 144 / 3658 |
| LED TV size (width)         | inch/mm               | 126 / 3200 |
| LED TV size (height)        | inch/mm               | 69 / 1760  |
| Standard LED screen (depth) | inch/mm               | 3.9 / 100  |
| LED TV area                 | sq.ft./m <sup>2</sup> | 60,3 / 5,6 |
| LED TV system weight        | kg                    | 1650       |

**TV SYSTEM**

|                                      |         |                |
|--------------------------------------|---------|----------------|
| Brightness                           | nits    | 4,000          |
| Pixel Pitch                          | mm      | 1,60           |
| Processing Depth                     | bit     | 16 per color   |
| Color Spectrum                       | colors  | 64 billion     |
| Refresh Rate                         | Hz      | 3,840          |
| Lifespan LED                         | h       | 100,000        |
| Contrast Ratio                       |         | 7,000:1        |
| Colour Temperature                   | k       | 6,500 - 10,000 |
| Viewing Angle- Horizontal   Vertical | degrees | 160   160      |
| LED fixings                          |         | back - service |
| Operating Temperature range          | °C      | -20 to +45     |
| Broadband speaker peak out           | W       | 2 x 250        |
| Broadband speaker frequency range    |         | 40 Hz - 22 kHz |

**INPUT / OUTPUT**

|                    |                                |
|--------------------|--------------------------------|
| Video Input        | 1 x HDMI, HDCP 2.2 support     |
| Serial In/Output   | 2 x USB, 1 x RS232             |
| Audio Output       | pre-amp, 11.2, independent sub |
| Network Connection | 1 x RJ45                       |

**OPERATION**

|                                 |                  |                                   |
|---------------------------------|------------------|-----------------------------------|
| Power Supply LED screen         |                  | 3 x 400V+N+PE/32A/50-60Hz AC (3~) |
| Input Power max   typical       | W/m <sup>2</sup> | 880   230                         |
| Power Consumption max   typical | kW               | 14   3.8                          |

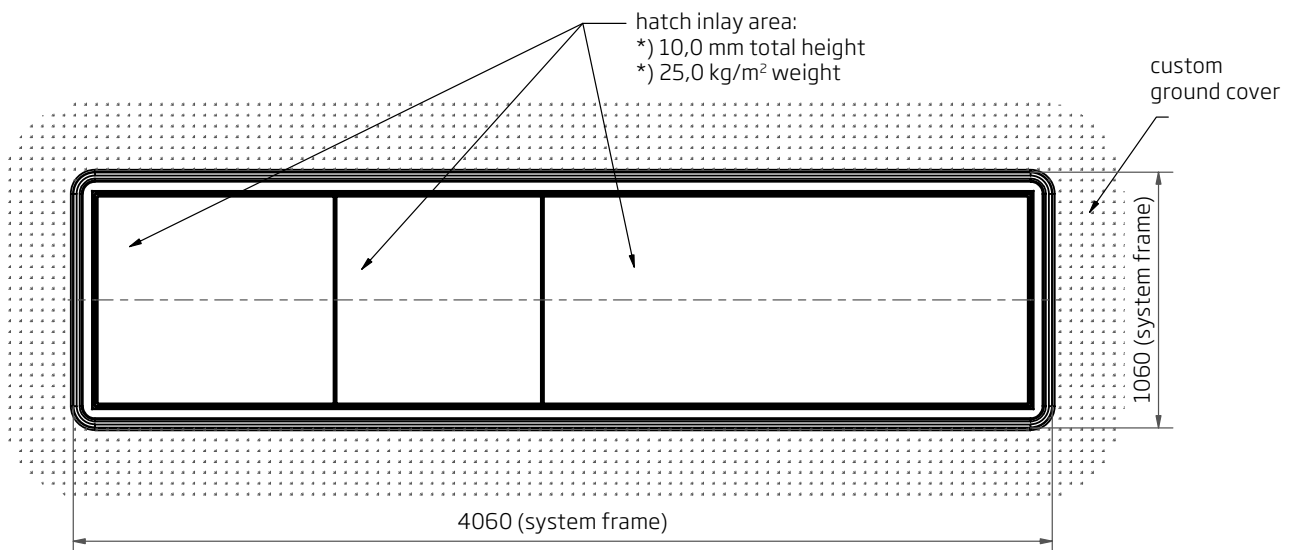
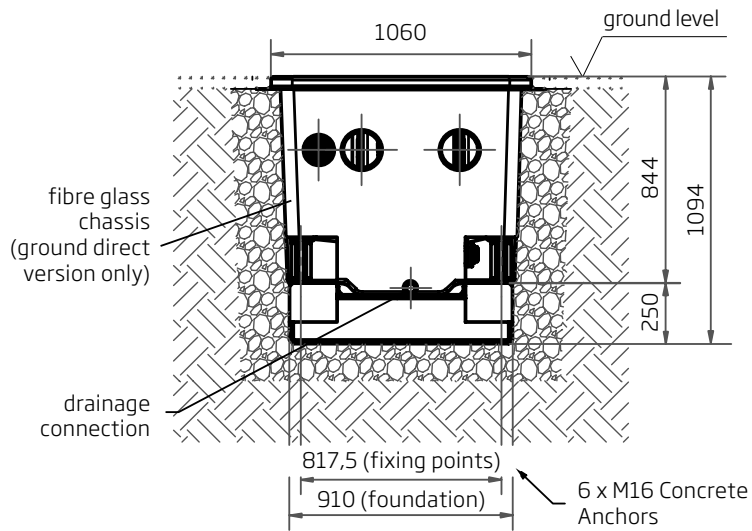
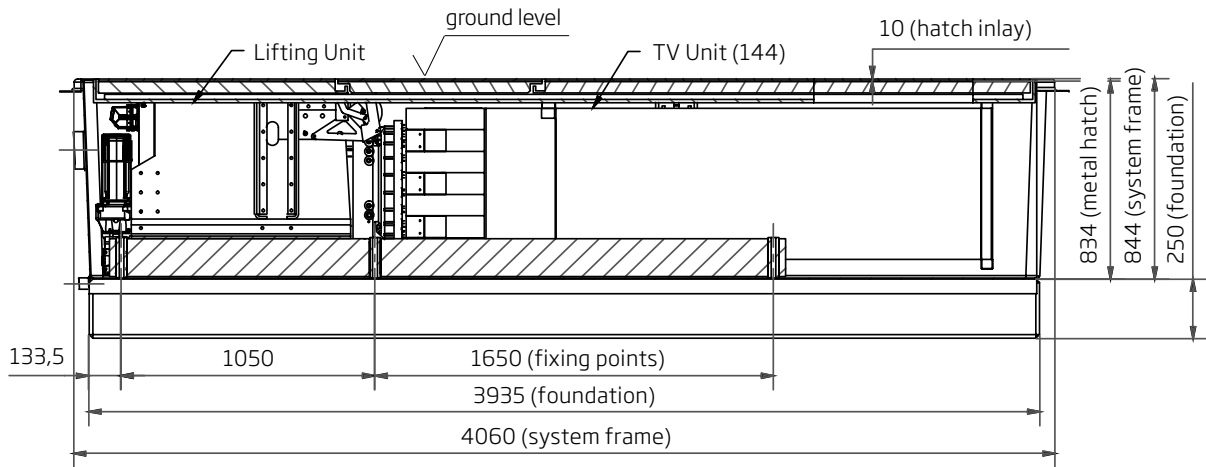
**PHYSICAL DIMENSIONS STOWED POSITION**

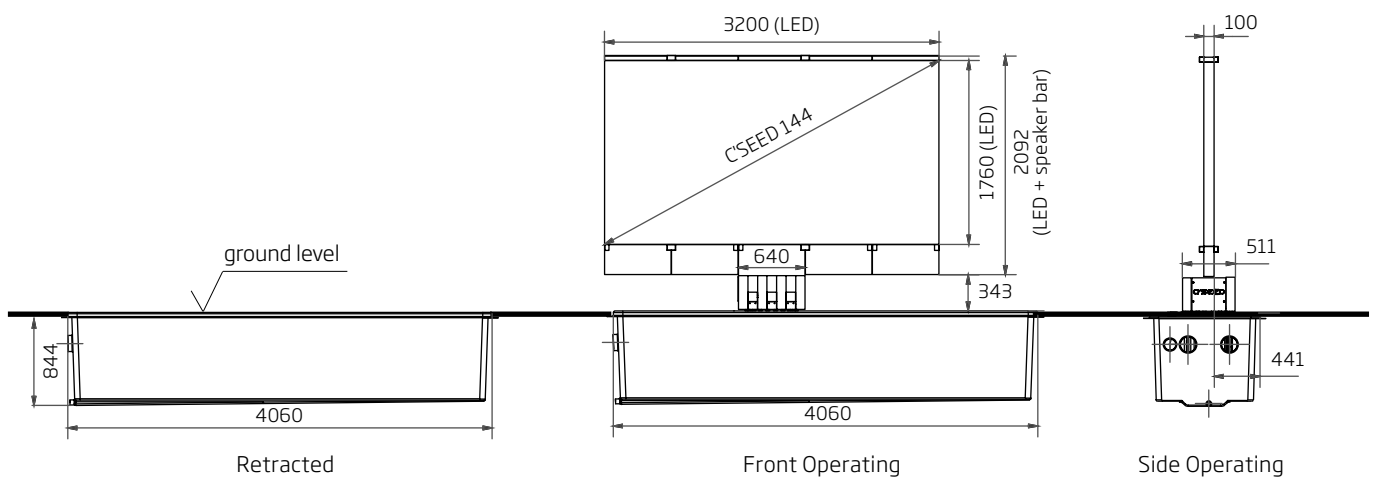
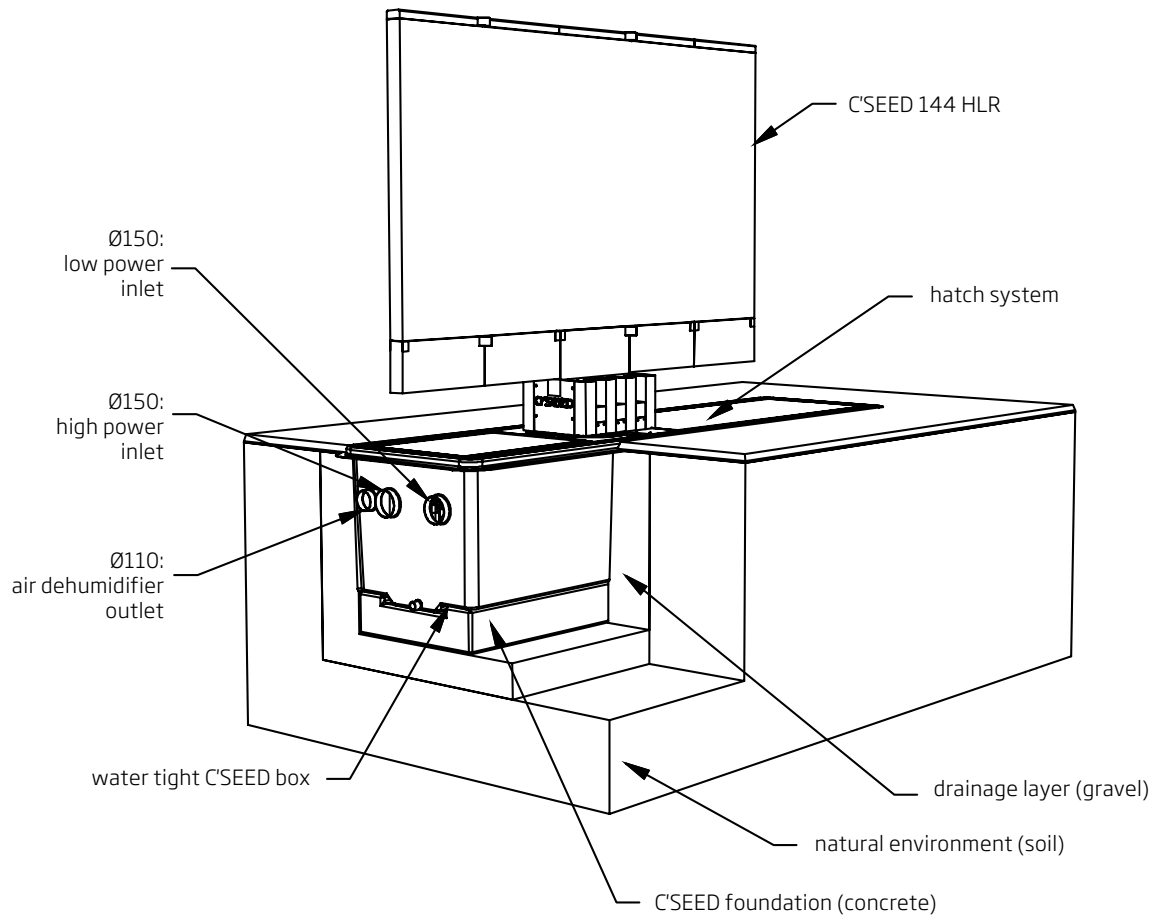
|                              |         |             |
|------------------------------|---------|-------------|
| Concrete basin size (Length) | inch/mm | 160 / 4.060 |
| Concrete basin size (Width)  | inch/mm | 42 / 1.060  |
| Concrete basin size (Height) | inch/mm | 34 / 844    |

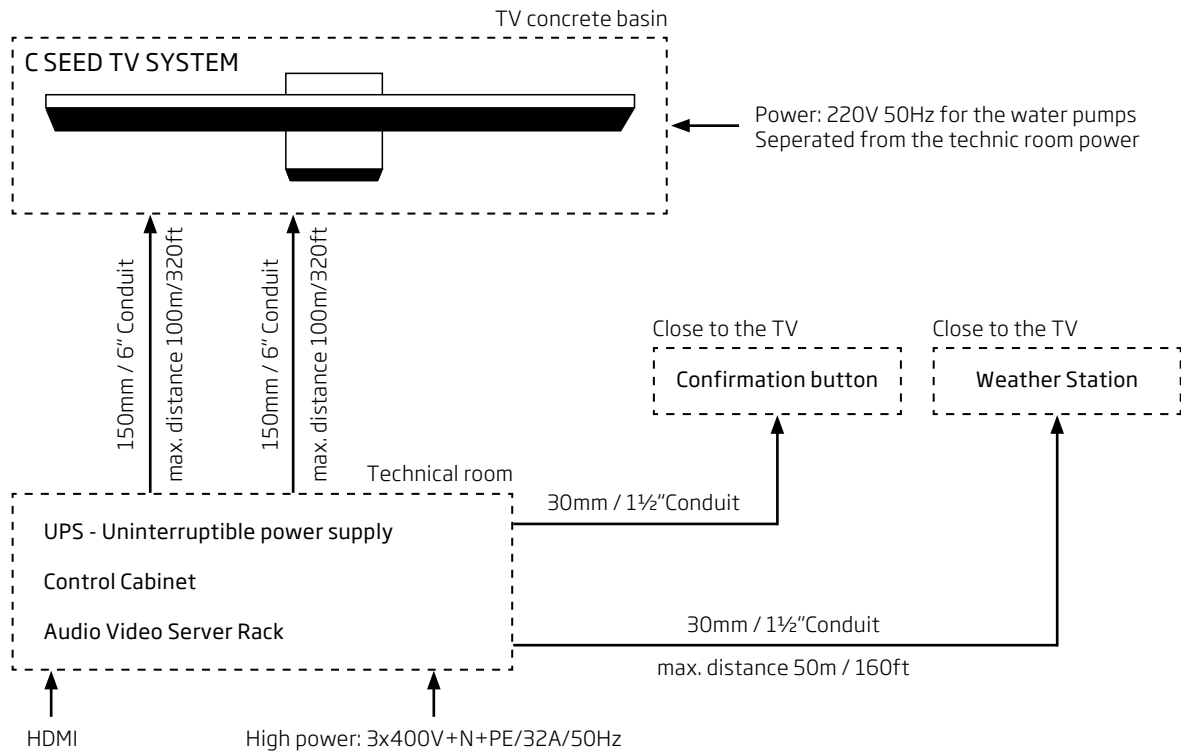
**SPECIFIC FEATURES**

|                    |  |
|--------------------|--|
| Automatic TV Cover | Option 1: 180° TV rotation in only one direction |
|                    | Option 2: 90° TV rotation left & right           |

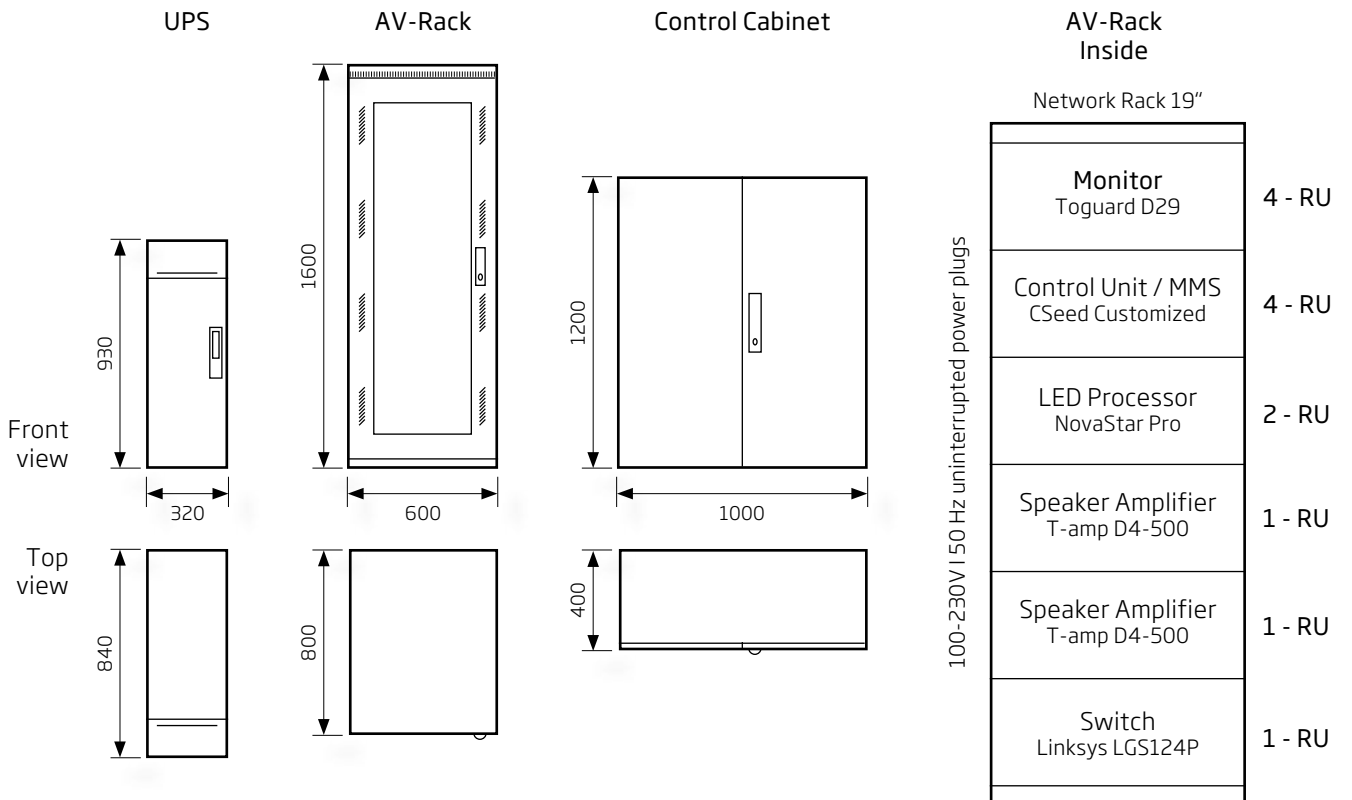








## EQUIPMENT



### TV CONCRETE BASIN

---

- 4060x1060x844 mm | 160x42x34 inches | LxWxD
  - according to final TV concrete basin plan
- Earthing of the TV well (min. 3 times)
- Drainage - Natural drainage directly from the sump pit
- Emergency stop buzzer
- Confirmation Bottom
- HMI | Touch panel for wired system control
- Dehumidifier device (provided by C SEED)

### TECHNICAL ROOM

---

100m | 320 feet from TV concrete basin | 2 Conduits with 150mm | 6 inches (not less)

#### Transformer | Power Converter (provided by owner of the venue)

---

- Requested Output: 400V - 32A- 3 Phases +N +PE.

#### UPS | uninterrupt power supply

---

- 32x93x84 cm | 12x36x33 inches | WxHxD
- High power: 3x400V+N+PE/32A/50-60Hz uninterrupt high power
  - high power transformer needed (provided by owner of the venue)

#### Control Cabinet

---

- 1000x1200x400 mm | 39x48x16 inches | WxHxD
  - feed cable with 5 pins or 4 pins plus additional earthing
- power protection with a "fault-current circuit breaker AC/DC sensitive and electric frequency converter capable"

#### AV Rack

---

- SAT | video | TV signals to be connected via HDMI inputs
- 6x 230V | 50 Hz uninterrupt power (European plugs)
- Internet connection as of beginning of installation (permanent!)
- Rack monitor
- HDMI Input 1pcs.

### WEATHER STATION / WIND SENSOR

---

- Location near the screen - conduit needed to TV concrete basin ca .30mm | 1 ½ inches

### CABLING DUCTS AND CONDUITS

---

- 1 tube with diameter ca. 150 mm | 6 inches (not less)
  - Located between electricity cabinet and TV concrete basin (high power connection)
- 1 Tube with diameter ca. 150mm | 6 inches (not less)
  - Located between AV rack and TV concrete basin (data cables from MMS)
- 1 Tube with diameter ca. 30mm | 1 ½ inches (not less)
  - Located between weather station and control cabinet (weather station data)
- 1 Tube with diameter ca. 30 mm | 1½ inches (not less)
  - Located between Control Cabinet and Confirmation Button

### SERVICES PROVIDED BY AND AT THE EXPENSES OF THE OWNER OF THE VENUE

---

- High power: 3x400V+N+PE/32A/50-60Hz uninterrupted high power at UPS
- Internet connection at the AV - Rack as of beginning of the installation
- WIFI I WLAN at the venue as of beginning of the installation
- Permissions of local authorities as appropriate
- Civil engineer calculations I statics and permits
- Access for heavy duty excavator, crane and trucks to TV well
- Excavation for the construction of the TV concrete basin according to ground-structure
- Waterproof construction of the TV concrete basin according to C SEED plans
- Cabling ducts and conduits to and from TV concrete basin according to plan
- Sat I video I TV signals at the AV-Rack
- Crane on site approximately 10 hours in total (max. 4,5 tons & 5 meters of height)
- Revitalization of the venue when operating I post-installation

### SERVICES PROVIDED BY C SEED

---

- 2 Site Visits
  - First site visit (meeting with construction company I civil engineer I etc.)
  - Second site visit (Control of the finished construction before delivery)
- Standard plan for construction of the TV well for local civil engineer
- Plan of locations (indoor I outdoor) of system components
- Plan of cabling ducts and conduits
- Delivery of all cables (electrical & optical fiber cables)
- Coordination with local electrician
- Coordination with local sat I video I TV professional
- Implementation, programming & testing of the C SEED 144 HLR
  - TCP/IP control protocol for home automation
- Operation training for technical staff of the venue



## Checklist Customer

---

- High power: 3x400V+N+PE/32A/50-60Hz uninterrupted high power at UPS
- Internet connection at the AV-Rack as of beginning of the installation
- WIFI I WLAN at the venue as of beginning of the installation
- Permissions of local authorities as appropriate
- Civil engineer calculations I statics and permits
- Access for heavy duty excavator, crane and trucks to TV well
- Excavation for the construction of the TV concrete basin according to ground-structure
- Waterproof construction of the TV concrete basin according to C SEED plans
- Cabling ducts and conduits to and from TV basin according to plan
- Sat I video I TV signals at the AV-Rack
- Crane on site approximately 10 hours in total (max. 4,5 tons)
- Revitalization of the venue when operating I post-installation
- Transformer I Power Converter -Requested Output: 400V - 32A- 3 Phases +N +PE
- Optional: Air condition system (provided by owner of the venue)
- Optional: Heating device (provided by owner of the venue)

## Contacts

---

Owner representative \_\_\_\_\_

Construction company of the venue \_\_\_\_\_

C SEED Project manager \_\_\_\_\_

Vers.: 5.5/TZ/24.06.21

"The information and specification contained in the implementation concept are information purpose only and are subject to change without prior notice"

[www.cseed.tv](http://www.cseed.tv)